



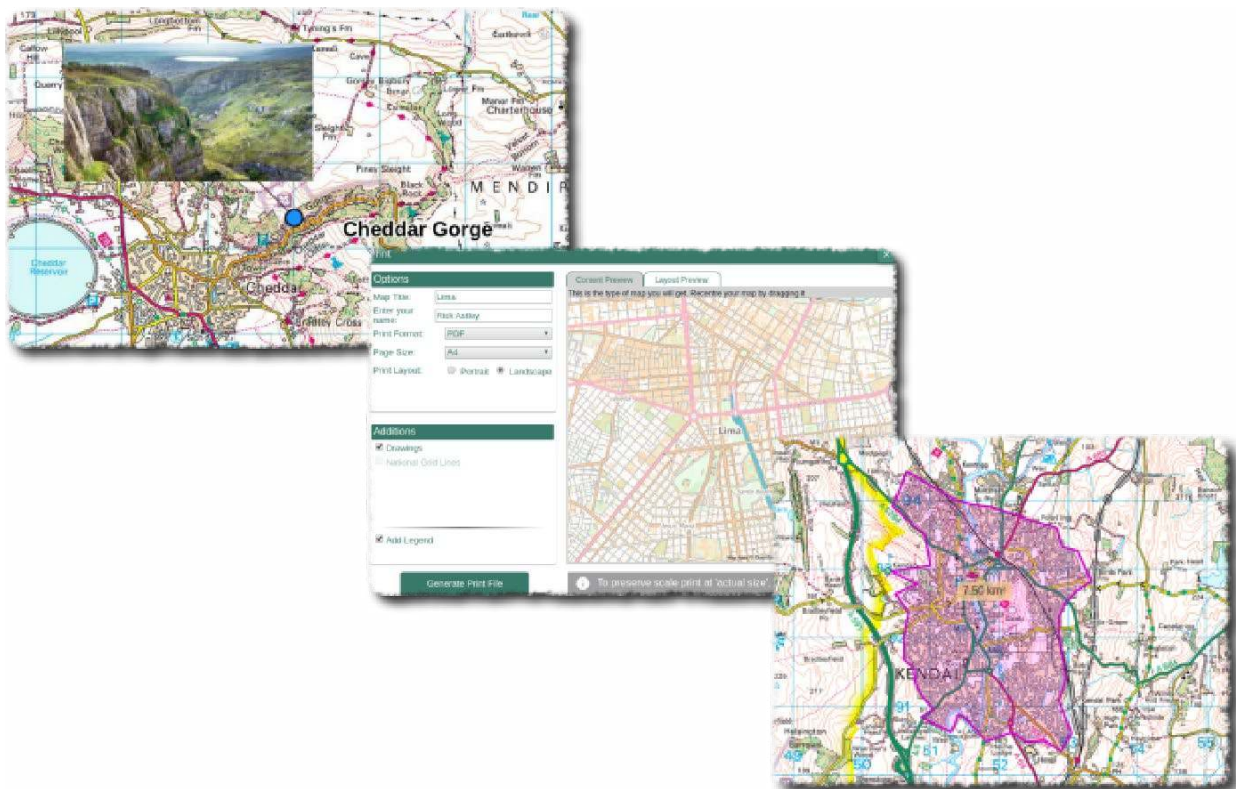
# Picture Detectives

Matching Images and Clues to Map References

Paula Owens

Geography Teaching Resource

Primary





## Contents

Contents.....	2
Digimap for Schools Geography Resources .....	3
Content and Curriculum Links.....	3
Activity .....	3
Introduction .....	3
Main activity.....	4
Tasks.....	4
Resources .....	5
A.) Answers sheet.....	6
B.) Picture Detectives: Solve the mystery of where these pictures were taken! .....	7
C.) Picture Detectives: match the photo and find the places!.....	8
D.) Picture Detectives: most likely to...? .....	9
E.) Picture Detectives: most likely to ...? .....	10
F.) Picture Detectives: most likely to ...? .....	11
G.) Picture Detectives: most likely to ...?.....	12
Taking it further .....	13
Links .....	13
Copyright.....	14
Acknowledgements.....	14





## Digimap for Schools Geography Resources

These resources are a guide for teachers to demonstrate to the whole class or direct individual students as appropriate. Each activity has several ideas within it that you can tailor to suit your class and pupils. Some resources contain worksheets for direct distribution to pupils.

<https://digimapforschools.edina.ac.uk/>

### Content and Curriculum Links

Level	Context	Location
Primary	Matching images and clues to map references	Various locations and can be adapted for use anywhere

Knowledge/Skills	Using four and six figure grid references to find places, reading and interpreting maps, using a map key, placing labels and annotating maps
Curriculum links (England)	Use the eight points of a compass, four-figure grid references, symbols and key (including the use of Ordnance Survey maps) to build their knowledge of the United Kingdom; use maps and digital mapping to locate and describe features
Curriculum links (Wales)	Identify and locate places and environments using maps; use maps, imagery and ICT to find and present locational information
Scottish Curriculum for Excellence	Social Studies Outcomes: People, Place and Environment: 2-13a, 2-14a

### Activity

Matching descriptions, of what people are most likely to do in a place, with muddled grid references; finding out the location of photographs taken around Great Britain.

### Introduction

Maps, images and descriptive writing all offer us clues about places: where they are, what they are like and what you can do there. Digimap for Schools uses symbols and labels at various scales and these provide very detailed information about places and landscapes shown on the map. This activity is designed to help pupils read and interpret that information.





## Main activity

Before you begin you may wish to discuss some familiar places with the class and where they might be most likely to for example, go shopping, go for a walk, ride a bike, and so on. Discuss how maps can help you identify what you can do in a place.

The activity provides a set of 20 photographs organised on four sheets, showing various locations around Great Britain. There are six worksheets to choose from offering three different levels of challenge. The first two use all the photographs and the last four each use just one photograph sheet. Each worksheet has a description of what you might do in that place and a grid reference. These have all been muddled up. Pupils will act as detectives to find out where these places are. The following instructions are suitable for all worksheets.

## Tasks

- Open Digimap for Schools.
- Select Overlays.
- Check the box next to British National Grid.
- Type one of the grid references from a worksheet into the search box.
- When the map opens pupils look at the clues on the map to find out what this place is like and to match each of the grid references with a picture and a 'most likely to' description. They may find the following helpful:
  1. Using the map key to help identify features, symbols and letters.
  2. Zooming in and out of the map view to look at different scales.
  3. Moving the map a little to explore the features shown.
  4. TIP: If they lose the place they are exploring while moving the map, hit 'search' again to re-centre the map on the grid reference.
- In addition to completing the worksheet you may also ask pupils to use the Drawing tools to label all of the places with the photo number and a title for example, *1. Derby Station*. To do this:
  1. Select Add standalone label.
  2. Select the text colour, font and type size.





3. Then click on a location where the photo was taken. Write the name of the place with the number of the photograph.
4. When all of the photographs are found pupils can give the map a title, save and print as required.



## Resources

- A. Answers sheet for teachers with image numbers, grid references and descriptions.
- B. Worksheet – 20 descriptions and grid references. Photograph numbers are already given for each description.
- C. Worksheet – as above, but picture numbers not given (slightly harder for higher ability pupils).
- D. Worksheet – descriptions and grid references just for images 1–5 (Sheet H).
- E. Worksheet – descriptions and grid references just for images 6–10 (Sheet I).
- F. Worksheet – descriptions and grid references for images 11–15 (Sheet J).
- G. Worksheet – descriptions and grid references for images 16–20 (Sheet K).  
(Sheets D, E, F, G are easier sheets for pupils requiring a little more support).
- H. Photograph sheet to match D
- I. Photograph sheet to match E
- J. Photograph sheet to match F
- K. Photograph sheet to match G





## A.) Answers sheet

Photo	Where is this place?	In this place you are most likely to ...	Grid reference
1	The Swiss Re Tower or the Gherkin as it is nicknamed, City of London	See a famous city landmark	TQ332812
2	Forestry Commission Path Abergorlech	Go hiking through a forest	SN587338
3	Buckingham Palace	See where the Queen lives	TQ290796
4	Sea, North coast of Sheppey off Warden Point	Go out fishing in a boat	TR017733
5	View of viaduct over the River Wey, Guildford, Surrey	Walk beside a river and under a viaduct	SU992504
6	Hampton Court Palace	See somewhere made famous by Henry VIII	TQ157684
7	WW2 defence battery Shellness, Sheppey	Play in an old WW2 defence building	TR052676
8	Windsor Castle, Windsor	See a castle, do some shopping and take a boat trip	SU970770
9	Ferry on the Thames, Windsor	Take a boat ride on the Thames	SU968773
10	Leeds Castle, Leeds, Kent	Visit a castle in the countryside	TQ836532
11	Natural History Museum	See a whale and a dinosaur	TQ266790
12	Sheffield Railway Station	Catch a train	SK357869
13	Llanberis Station, Snowdon Mountain Railway	Go up a mountain on a train	SH582597
14	Coast at Carreg Lydan, Cardigan Island Nature Reserve	Watch seals and have a picnic	SN163512
15	Ruins of castle Newcastle Emlyn, Carmarthenshire	Visit a ruined castle	SN310407
16	Devil's Bridge, Pontarfynach	Find waterfalls	SN741772
17	Youth Hostel Borth,	Stay in a Youth Hostel	SN608907
18	Rye Harbour, Sussex	Watch boats in a harbour	TQ942190
19	Edinburgh Castle	Visit a castle built on a volcanic rock	NT251735





## B.) Picture Detectives: Solve the mystery of where these pictures were taken!

Photo	Where are you most likely to ...?	Write the grid reference here
1	See a famous city landmark	
2	Go hiking through a forest	
3	See where the Queen lives	
4	Go out fishing in a boat	
5	Walk beside a river and under a viaduct	
6	See somewhere made famous by Henry VIII	
7	Play in an old WW2 defence building	
8	See a castle, do some shopping and take a boat trip	
9	Take a boat ride on the Thames	
10	Visit a castle in the countryside	
11	See a whale and a dinosaur	
12	Catch a train	
13	Go up a mountain on a train	
14	Watch seals and have a picnic	
15	Visit a ruined castle	
16	Find waterfalls	
17	Stay in a Youth Hostel	
18	Watch boats in a harbour	
19	Visit a castle built on a volcanic rock	
20	Go to church on an island	

Grid references				
TR017733	SN163512	SN310407	TQ836532	SU970770
SU968773	TR052676	SU992504	TQ266790	TQ332812
SH582597	SN741772	TQ942190	NT251735	SN587338
SK357869	SN608907	TQ157684	NM503553	TQ290796





### C.) Picture Detectives: match the photo and find the places!

Photo	Where could you go to ...?	Write the grid reference here
	See a famous city landmark	
	Go hiking through a forest	
	See where the Queen lives	
	Go out fishing in a boat	
	Walk beside a river and under a viaduct	
	See somewhere made famous by Henry VIII	
	Play in an old WW2 defence building	
	See a castle, do some shopping and take a boat trip	
	Take a boat ride on the Thames	
	Visit a castle in the countryside	
	See a whale and a dinosaur	
	Catch a train	
	Go up a mountain on a train	
	Watch seals and have a picnic	
	Visit a ruined castle?	
	Find waterfalls	
	Stay in a Youth Hostel	
	Watch boats in a harbour	
	Visit a castle built on a volcanic rock	
	Go to church on an island	

Grid References				
TR017733	SN163512	SN310407	TQ836532	SU970770
SU968773	TR052676	SU992504	TQ266790	TQ332812
SH582597	SN741772	TQ942190	NT251735	SN587338
SK357869	SN608907	TQ157684	NM503553	TQ290796







### D.) Picture Detectives: most likely to...?

These pictures, descriptions and grid references show locations for planned days out but they've all become muddled up!

Can you use your geographical detective skills to sort them out?

Match the pictures first to the activity. Then, investigate the mixed up grid references to try and find out where each place is.

In which place are you most likely to ...?	Photo	Where is this place? (Give the name of the location or place shown on the map)
See a famous city landmark		
Go hiking through a forest		
See where the Queen lives		
Go out fishing in a boat		
Walk beside a river and under a viaduct		

Grid reference	Locate these grid references using the search tool on Digimap for Schools. Note any information such as place names or features that will help you match to images and activities.
SN587338	
TR017733	
TQ290796	
TQ332812	
SU992504	





### E.) Picture Detectives: most likely to ...?

These pictures, descriptions and grid references show locations for planned days out but they've all become muddled up!

Can you use your geographical detective skills to sort them out?

Match the pictures first to the activity. Then, investigate the mixed up grid references to try and find out where each place is.

In which place are you most likely to ...?	Photo	Where is this place? (Give the name of the location or place shown on the map)
See somewhere made famous by Henry VIII		
Play in an old WW2 defence building		
See a castle, do some shopping, take a boat trip		
Take a boat ride on the Thames		
Visit a castle in the countryside		

Grid reference	What can you find there? (Make notes if it helps you)
TQ836532	
TR052676	
SU968773	
TQ157684	
SU970770	





## F.) Picture Detectives: most likely to ...?

These pictures, descriptions and grid references show locations for planned days out but they've all become muddled up!

Can you use your geographical detective skills to sort them out?

Match the pictures first to the activity. Then, investigate the mixed up grid references to try and find out where each place is.

In which place are you most likely to ...?	Photo	Where is this place (Give the name of the location or place shown on the
See a whale and a dinosaur		
Catch a train		
Go up a mountain on a train		
Watch seals and have a picnic		
Visit a ruined castle?		

Grid reference	What can you find there? (Make notes if it helps you)
SK357869	
SN163512	
TQ266790	
SH582597	
SN310407	





### G.) Picture Detectives: most likely to ...?

These pictures, descriptions and grid references show locations for planned days out but they've all become muddled up!

Can you use your geographical detective skills to sort them out?

Match the pictures first to the activity. Then, investigate the mixed up grid references to try and find out where each place is.

In which place are you most likely to ...?	Photo	Where is this place? (Give the name of the location or place shown on the map)
Find waterfalls		
Stay in a Youth Hostel		
Watch boats in a harbour		
Visit a castle built on a volcanic rock		
Go to church on an island		

Grid reference	What can you find there? (Make notes if it helps you)
SN608907	
NT251735	
NM503553	
TQ942190	
SN741772	





## Taking it further

- Ask pupils to research some more photographs of places around Great Britain using Image Search in Digimap for Schools and make up 'Most likely to' questions for them.
- Ask pupils to make a collection of local photographs and identify them on a local map using six figure grid references.
- Ask pupils to investigate some of the photographs provided and do some further research about the place or building shown. Illustrate with some maps of your choosing.

## Links

- Using grid references guide:

<https://getoutside.ordnancesurvey.co.uk/guides/beginners-guide-to-grid-references/>





## Copyright

©EDINA at the University of Edinburgh 2016

This work is licensed under a Creative Commons Attribution-Non Commercial Licence



## Acknowledgements

© CollinsBartholomew Ltd (2019) FOR SCHOOLS USE ONLY

© Crown copyright and database rights 2020 Ordnance Survey (100025252). FOR SCHOOLS USE ONLY.

Aerial photography © Getmapping plc. Contains OS data. FOR SCHOOLS USE ONLY.

Historic mapping courtesy of the National Library of Scotland. FOR SCHOOLS USE ONLY.

